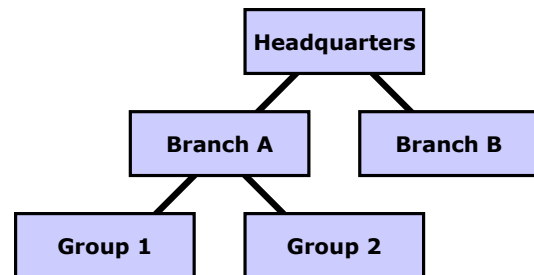

This Fact Sheet describes how to deploy the FastTracker service to remote offices, branches, and subsidiaries.

FastTracker is the ideal Internet management tool for companies that have multiple branches or subsidiaries, but who wish to centralize reporting and policy administration.

FastTracker's flexible group hierarchy – which allows you to replicate your org chart in the user database – lets you easily delegate reporting and policy management functions to staff at any level of the organization.



For example, consider the org chart at right. You may enable administrators to view reports and set policy at any level – administrators from Group 1 can only see that group, administrators for Branch A can see Group 1, Group 2, and Branch A, and administrators at Headquarters have a view of the entire organization.

For more information on using groups with FastTracker, see the **Using Groups Fact Sheet¹**.

The method of deploying FastTracker to additional branches depends on your network setup. There are two major ways of setting up branches:

- Employees at branches log in to a central server located at headquarters, usually over a VPN or Frame Relay connection
- Employees at branches log in to a server located at the branch office.

Your company may be using a combination of these two approaches. If the best course of action is unclear, email support@fastdatatech.com for more information.

Employees logging in to a central server at headquarters

When employees at branches log in to a central server, usually located at headquarters, the easiest way to deploy FastTracker is to treat these users in the

¹ <http://www.fastdatatech.com/documentation/using-groups-fact-sheet.pdf>

exact same fashion that you used to deploy your initial set of users. Simply deploy the FPP installation package (if you are using workstation installation) or login script changes to them as you did for your initial set of users.

It doesn't matter whether branch employees' web browsing goes directly to the Internet, or is forced to come back through headquarters before going to the Internet – FastTracker will not be affected by these details. The only exception to this rule is when branches have their own web proxy servers; in this case, the FPP configuration will have to be different for each branch. Contact FastTracker Support at support@fastdatatech.com for details.

Employees logging in to a server at the branch office

When branches have their own servers, the easiest way to deploy FastTracker is to activate the branch as if it were a separate company, even though from a reporting and policy management standpoint, it will appear as a branch within your company.

This begins with providing a new **Environmental Survey** new form to Fast Data Technology for each branch that you wish to activate. You will be issued a new domain number for each new branch. As with the activation of your initial set of users, you can use workstation installations or login script installations (see the **Logic Scripts Fact Sheet**² for more information).

In your reports, the new branch will automatically appear as a subgroup of your main company.

² <http://www.fastdatatech.com/documentation/login-scripts-fact-sheet.pdf>