

Overview

Winbind is an open source active directory connector that is shipped as part of the Samba system. This is probably the most common way to authenticate users when deploying FastTracker using agentless authentication. If you are using FastTracker in standalone mode, this works well for authenticating users forced through the FastTracker server using Active Directory's Group Policy.

With Winbind, the FastTracker server asks each user for his or her login name using the 'proxy authentication'¹ capability that is built into all web browsers. These credentials are forwarded by the web browser with every HTTP header. Passwords are Base64-encoded but not encrypted.

The user's credentials are checked against your directory. If authentication is successful, the user is granted access within the limitations of your designed FastTracker policy. In the event of a non-Internet Explorer browser requesting web resources (in AD/NT mode), the user will be prompted to provide proper Active Directory credentials to access the Internet. The IP address-username association is then cached to prevent users from being prompted for their username every time they launch a new web browser during the course of the workday. This cache expires by the next business day.

With agentless authentication, users' web browsers must be configured to use the FastTracker server as their web proxy, using port 3128 in order for authentication to occur properly. You accomplish this by manually setting browser settings or using an automated method such as Active Directory's Group Policy or DHCP settings.

If a user's web traffic is not directed to FastTracker, then FastTracker is in effect disabled for that user. An additional **optional** step is to configure your firewall to disallow direct access to the Internet for ports 80 and 443, thereby forcing users to use the FastTracker server for web access. If you do not do this, users can browse the Internet unfiltered by removing references to the FastTracker server from their browser proxy settings.

To enable Winbind authentication you will need to join the FastTracker server to your domain as well as make changes to `squid.conf` which is located in `/usr/local/squid/etc`. See details below.

To disable Winbind authentication you simply apply comment characters (`#`) to the file before each line in `squid.conf` that was changed initially.

¹ Technically known as Basic Proxy-Authentication

Setting up FastTracker in your Windows NT/Active Directory Domains

1. Log in to the FastTracker server as `root`.
2. Edit the `smb.conf` file: `/usr/local/etc/smb.conf`
3. Edit the answers to the lines which are in bold/italics:

```
# Global parameters
[global]
  workgroup = DOMAINNAME
  netbios name = SERVERNAME
  password server = AD/PDC SERVER
  security = DOMAIN
  encrypt passwords = Yes
  wins server = IP OF WINS SERVER
  winbind uid = 10000-20000
  winbind gid = 10000-20000
  winbind use default domain = yes
```
4. Create a machine account on your Active Directory/NT Server that matches the netbios name you gave your FastTracker server in the `smb.conf` file.
5. Join the domain by typing:

```
smbpasswd -j DOMAINNAME -r SERVERNAME -U Administrator
```
6. Start the winbind server and check to ensure it's working correctly.

```
type ' /usr/local/sbin/windbind '
```

wait a few moments and then

```
type ' wbinfo -t '
```

the proper response should be -
Secret is good
7. Configure FastTracker to require authentication by editing the following file:
`/usr/local/squid/etc/squid.conf`
 - a. Find the lines that read:

```
#auth_param ntlm program /usr/local/squid/libexec/wb_ntlmauth
#auth_param ntlm children 5
#auth_param ntlm max_challenge_reuses 0
#auth_param ntlm max_challenge_lifetime 2 minutes
#auth_param basic program /usr/local/squid/libexec/wb_auth
#auth_param basic children 5
#auth_param basic realm FastTracker Services
#auth_param basic credentialsttl 2 hours
```

and remove the comment (`#`) characters
 - b. Find the line that reads:

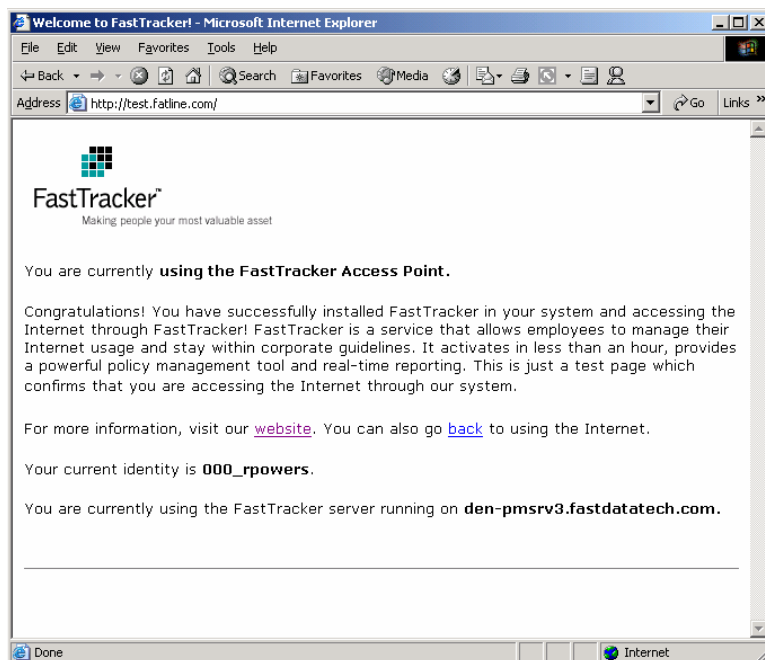
```
#acl AuthorizedUsers proxy_auth REQUIRED
```

and remove the comment (`#`) character.

- c. Find the line that reads
`#http_access allow all AuthorizedUsers`
and remove the comment (`#`) character.
 - d. Find the line that reads:
`#fatline_cache_ip_user on`
and remove the comment (`#`) character.
 - e. Save changes and close `squid.conf`
8. Test the auth module to ensure that it works correctly
 - a. Type the following:
`/usr/local/squid/libexec/wb_auth`
 - b. Type a `domain\username`, a space, and an invalid password.
You should see the response `ERR` to indicate an error.
 - c. Type a `domain\username`, a space, and a valid password.
You should see the response `OK` to indicate that authentication was successful.
 - d. Press Ctrl-D to terminate the program.
 9. Re-start FastTracker by typing `/usr/local/squid/bin/ftconfig -auto`.

Testing your FastTracker Installation

1. Browse to <http://test.fastdatatech.com>. If you see a welcome page appear (similar to what is shown below) then you are successfully browsing through FastTracker.



2. Browse to different web sites to ensure you can access them.
3. Browse to internal web sites, if you have any, to verify that you can still access them.

Congratulations – you have successfully installed FastTracker!

We would like to hear your feedback and first impressions on FastTracker and the activation process. Please drop us a line at support@fastdatatech.com.
